

Bayswater Secondary College

DESIGN BROCHURE



Year 11/12 building
Artist impression only, subject to change

In 2023, Bayswater Secondary College will open a new middle and senior learning hub

"I believe that a local school should reflect the needs and aspirations of the community it serves.

Our community contributed to a design that provides flexibility within a structured setting that facilitates an environment in which all students can learn and thrive.

There is something for everyone in the new build."

Liz Swan, College Principal



Courtyard
Artist impression only, subject to change

We are upgrading and expanding the college to provide modern and functional learning environments equipped for 21st century learning.

The College is part of the Bayswater Education Plan which is inspiring and supports children and young people in the Bayswater community to aim higher and achieve more at every stage of their learning journey.

Bayswater Secondary College received \$12.433 million to plan and bring its upgrade to life. It is part of the Victorian Government's \$10.9 billion investment to build 100 new schools and upgrade more than 1,700 existing ones.

Site and features

A middle and senior learning hub for students of every ability

Both middle and senior year students at Bayswater Secondary will have access to revitalised learning facilities through two new learning hubs. Each hub will include flexible facilities to cater to the wide variety of students' educational, social, and well-being needs.

New facilities will be arranged by year-level grouping and include spaces for integrated science, technology and art learning. Students will also have access to new locker areas.

These buildings will have operable windows for natural ventilation, with CO2 sensors in place to provide all classrooms with an alert of when windows should be opened.

Outdoors spaces that cater to student learning

Newly created undercover areas in both learning hubs will allow for further opportunities for students to learn outside. These outdoor informal learning areas provide students new ways to learn throughout the seasons.

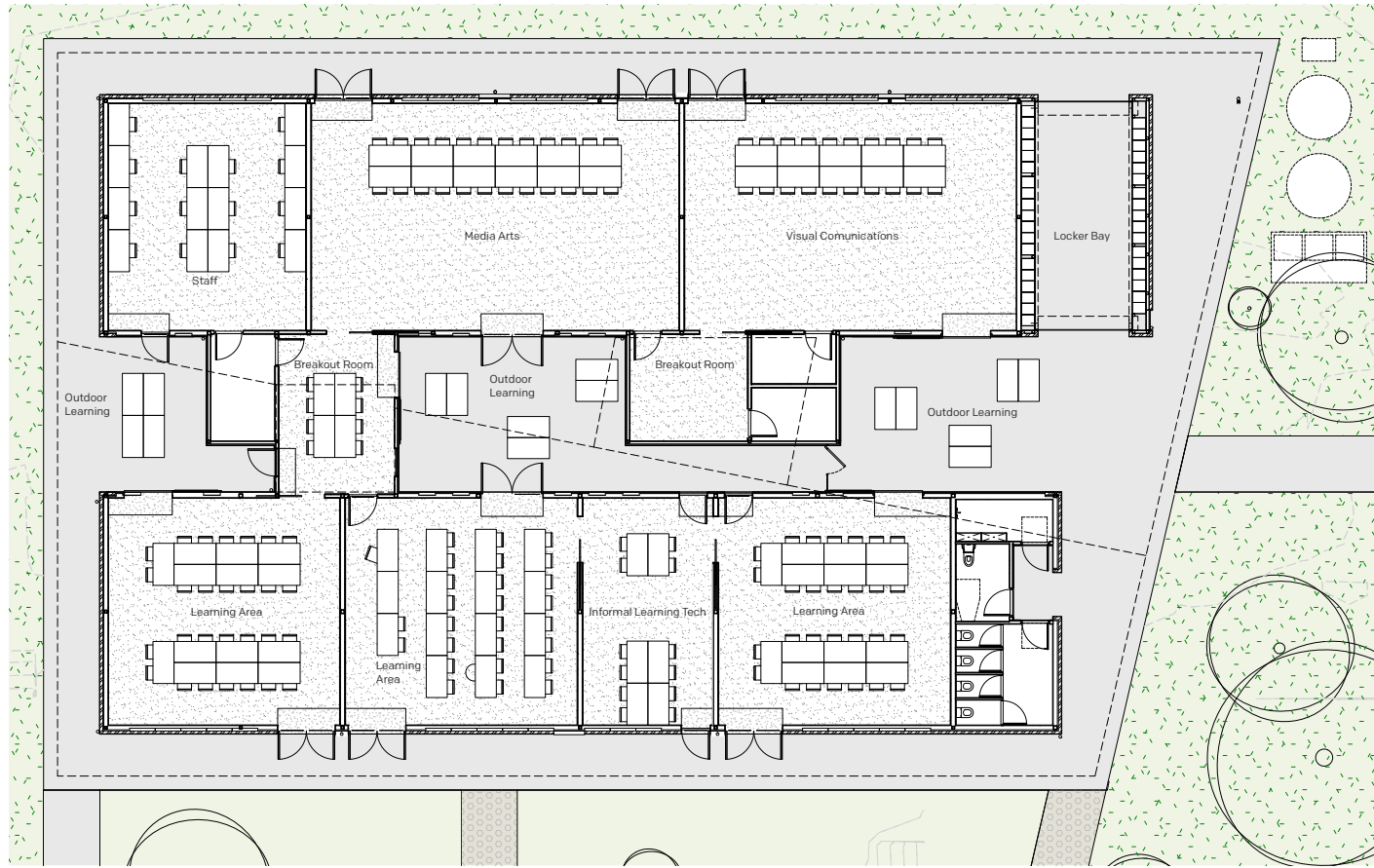
Staff will also use these spaces to circulate between the hubs.



Learning area
Artist impression only, subject to change

Site plans

Year 9/10 building



Year 11/12 building



Further information

To view the designs and for construction updates visit:
www.schoolbuildings.vic.gov.au/bayswater-secondary-college
or scan the qr code

For design or construction enquiries

☎ 1800 896 950
✉ vsba@education.vic.gov.au

For enrolment enquiries

☎ 9570 1016
✉ bayswater.sc@education.vic.gov.au
➔ bayswatersc.vic.edu.au/enrolment



Artist impression only, subject to change

You can contact us:

Victorian School Building Authority



1800 896 950



vsba@education.vic.gov.au



[/victorianschoolbuild](https://www.facebook.com/victorianschoolbuild)



www.schoolbuildings.vic.gov.au



For information in your language, please call the Victorian School Building Authority's translation service on **03 9280 0712**.