



# BAYSWATER SECONDARY COLLEGE



## SEAL PROGRAM (SELECT ENTRY ACCELERATED LEARNING)



DEVELOP KEY COMPETENCIES  
AND INCREASE EMPLOYABILITY  
AS A GLOBAL ACADEMIC CITIZEN

As part of our commitment to providing pathways of education excellence, Bayswater Secondary College is an accredited member of the Academy of Accredited Select Entry Schools (TAASS).

Bayswater Secondary College is currently seeking expressions of interest from students seeking a **SEAL** program for their child. Please call the college for further information or register your interest online at [bayswatersc.vic.edu.au](https://bayswatersc.vic.edu.au)

### THE BAYSWATER SEAL PROGRAM

Our SEAL program allows talented students to complete their Years 7-10 curriculum program in three years, allowing students to specialise and complete their VCE education in a range of subjects across the remaining three years. **SEAL** program students will also have the opportunity to begin University entrance courses.

# SAMPLE PROGRAM AND LINKS TO 21ST CENTURY LEARNING CAPABILITIES

The program will ensure that students engage in subjects and choices that will lead to their employability as a high performing global academic citizen

Bayswater's **SEAL** program aims to ensure that all students develop key competencies in the following top "future ready" capabilities (Institute for the Future – Apollo Research Institute, California) alongside their academic development.

## INCLUDING:

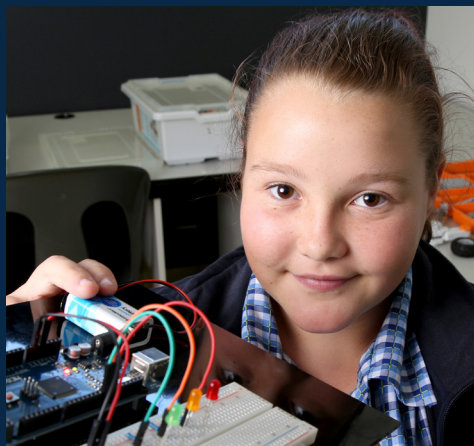
- New Media literacy
- Novel and adaptive thinking
- Computational thinking
- Sense making
- Design thinking
- Social intelligence
- Diversity of mindset
- Virtual collaboration

## SAMPLE YEAR 7 PROGRAM

- Global Literacy (English and Humanities)
- Junior STEM (Mathematics and Science & Advanced Digital Technology)
- Project Based Learning – Global Entrepreneurship & Leadership
- Health and Physical Education
- Arts Tech Rotation (Art, Music, Wood, Food)

## SAMPLE YEAR 8 PROGRAM

- Global Literacy
- Advanced Junior Stem (Mathematics and Science)
- Project Based Learning – Global Entrepreneurship
- Health and Physical Education
- Elective choices



## SAMPLE YEAR 9 PROGRAM

- Language and Literature
- Humanities
- Mathematics
- Science (Introduction to Biology and Chemistry)
- Health and Human Movement
- Elective choices
- Co-curricular Leadership

## SAMPLE YEAR 10 PROGRAM

- English Language (Units 1 and 2)
- Algorithmic(s) Elective
- General Mathematics
- Co-curricular Leadership
- **Student choice:** 3 Unit 1 and 2 sequences from a combination of Arts, Technology, Humanities, Science.

## UNIVERSITY ENHANCEMENT AND PATHWAYS

Students may elect to complete University entrance subjects / University Enhancement at either Swinburne University or Federation University during their final year as part of their **SEAL** pathway.